

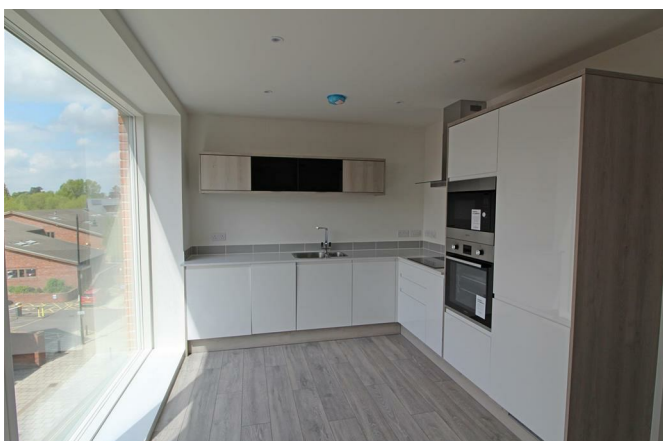
1 Chester House Chester Street Shrewsbury SY1 1PX



2 Bedroom Apartment
£785 PCM

The features

- Stylish development of Apartments
- Contemporary Fitted Kitchen with Appliances
- Bathroom with Shower
- Stunning Views over Shrewsbury
- Security Intercom System
- Spacious Kitchen/Living/Dining
- Master Bedroom with further bedroom



Chester House is a recently constructed stylish development of 12 luxury Apartments which have been finished to an exceptionally high standard of specification which truly must be viewed to appreciate the light and space each individual apartment has to offer. Set on the edge of the town centre being ideal for all amenities the county town has to offer.

Property details

ENTRANCE HALL

carpet flooring, video intercom system, UPVC part glazed door

OPEN PLAN KITCHEN/LIVING/DINING

engineered grey oak flooring, 3 floor to ceiling windows to front with views overlooking Shrewsbury Town, TV, Sky & telephone points, built in storage housing water tank, fitted kitchen with high gloss wall & base unites with work surface over, tiled splash back, electric oven, induction hob. extractor fan over, integrated fridge/freezer & washer dryer

BATHROOM

tiles flooring, part tiled walls, low level push flush WC, bath with thermostatic shower over, heated towel rail and vanity light mirror,

BEDROOM 1

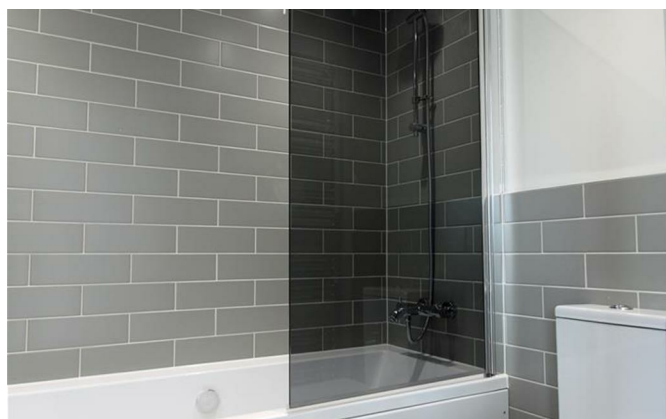
carpeted with window to rear, tv point

BEDROOM 2

carpeted with window to rear, tv point

1 Chester House Chester Street, Shrewsbury, SY1 1PX.

2 Bedroom Apartment
£785 PCM





Judy Bourne

Director at Monks

judy@monks.co.uk

Get in touch

Call. 01743 361422

Email. sales.shrewsbury@monks.co.uk

Click. www.monks.co.uk

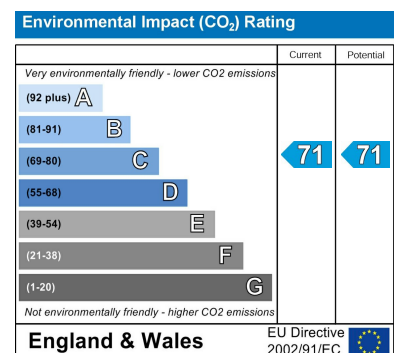
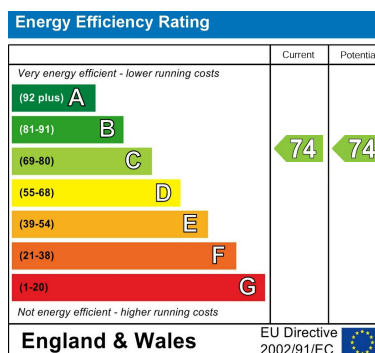
Shrewsbury office

10a Shoplatch, Shrewsbury,
Shropshire, SY1 1HL

We're available 7 days a week

HOME – four words that define who,
and what we are:

Honest, Original, Motivated, Empathetic



Monks for themselves and for the vendors of this property, whose agents they are give notice that:

- These particulars provide a general outline only for the guidance of intended purchasers and do not constitute part of an offer or contract.
- All descriptions, dimensions and distances are approximate, references to state and condition, relevant permissions for use and occupation and other details are provided in good faith and believed to be correct.
- No person in the employment of Monks has any authority to make or give any representation or warranty whatever in relation to this property.
- Electrics and other appliances mentioned in these particulars have not been tested by Monks. Therefore prospective purchasers must satisfy themselves as to their working order.